

**STANDARD ARRIVAL  
CHART -  
VISUAL**

**AERODROME ELEV 3848'**  
HEIGHTS RELATED TO  
AD - ELEV **3848'**

27°39'00.00"S  
023°00'00.00"E

SISHEN TIBA: 123.50

**SISHEN  
RNAV VISUAL RWY17/35  
XATKU/XASMI**

**Arrival Routes  
Description:**

**XATKU RWY 17:**  
Leave IMSUL on 286°M for XATKU. At XAKTU turn left onto 262°M to IXEPI. At IXEPI turn left onto final approach RWY 17.

**XASMI RWY 35:**  
Leave IMSUL on 271°M for XASMI. At XASMI turn right onto 275°M to UNGEX. At UNGEX turn right onto final approach RWY 35.

**RADIO COMMUNICATION FAILURE:**  
Proceed directly overhead FASS at 5900FT ALT. Descend on the dead side of the circuit and join appropriate downwind.

**NOTE:**  
1. Monitor FREQ 123.50MHZ from IMSUL INBD and on departure until in controlled airspace.  
2. Maintain 5NM separation with all other aircraft.

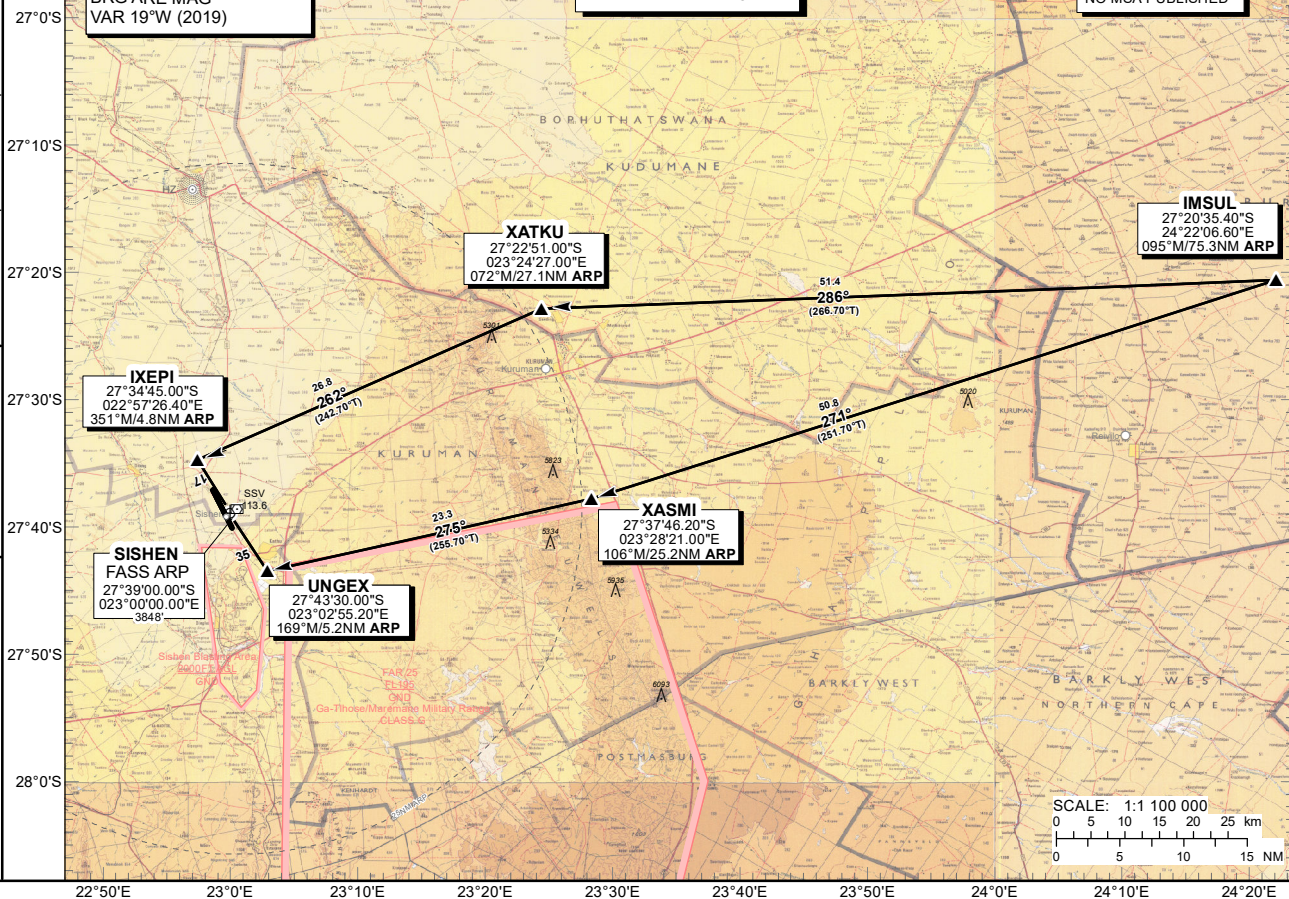
**WARNING:**  
1. Glider activity from time to time overhead Kuruman.

CHANGE: Bearings: XASMI - UNGEX

**ELEV, ALT & HGT IN FEET  
DIST IN METERS  
BRG ARE MAG  
VAR 19°W (2019)**

**CAUTION**  
REMAIN CLEAR OF FAR 25  
AND SISHEN BLASTING AREA

**NOTE**  
VFR ONLY  
NO MSA PUBLISHED



**IMSUL**  
27°20'35.40"S  
24°22'06.60"E  
095°M/75.3NM ARP

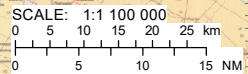
**XATKU**  
27°22'51.00"S  
023°24'27.00"E  
072°M/27.1NM ARP

**IXEPI**  
27°34'45.00"S  
022°57'26.40"E  
351°M/4.8NM ARP

**SISHEN  
FASS ARP**  
27°39'00.00"S  
023°00'00.00"E  
3848'

**UNGEX**  
27°43'30.00"S  
023°02'55.20"E  
169°M/5.2NM ARP

**XASMI**  
27°37'46.20"S  
023°28'21.00"E  
106°M/25.2NM ARP



EFF: 18 JUL 19